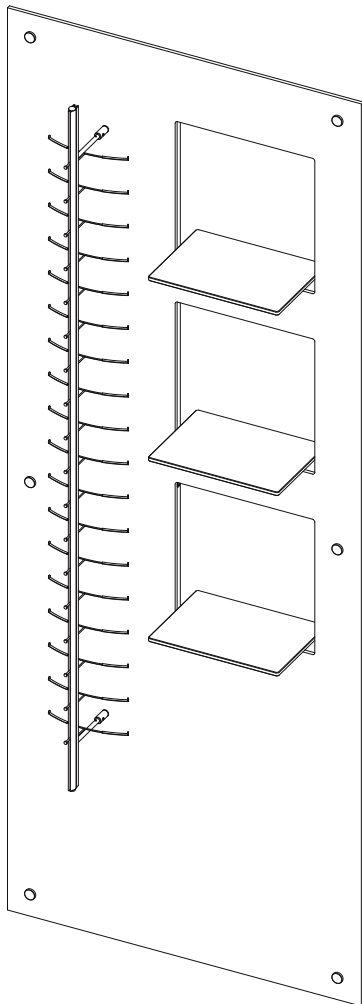
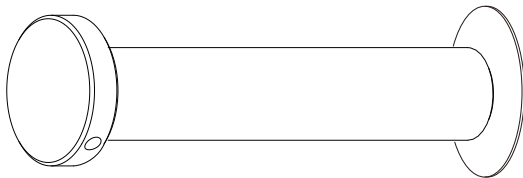


## WV1/MTE



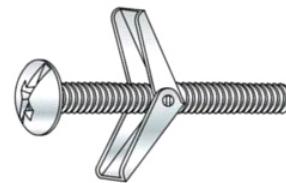
<b>A x 1</b>	<b>B x 1</b>
<b>C x 3</b>	<b>D x 3</b>
<b>E x 2</b>	<b>F x 4</b>

**G x 6**

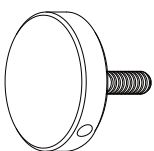


**Standoff (#13.15.20.85)**

**H x 6**



**Butterfly Anchors + Screws**



Standoff Cap  
13.15.20.85-CAP



Upper Inside Threaded Barrel  
13.15.20.85-BAR



Standoff Cylinder  
13.15.20.85-CYL



Standoff Screw  
13.15.20.85-SCR



Lower Inside Threaded Barrel  
13.15.20.85-BAR



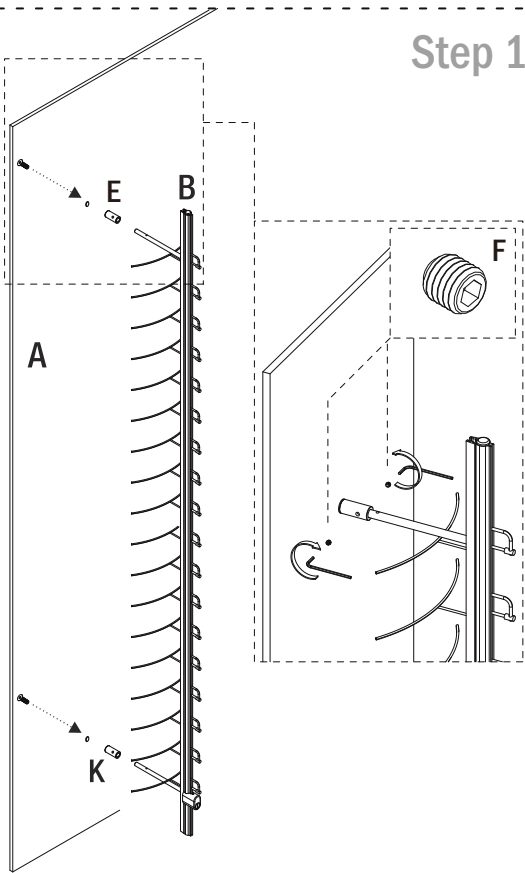
Standoff Washer  
13.15.20.85-WSH



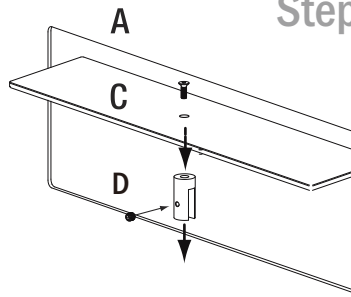
Toggle Bolt



## Step 1

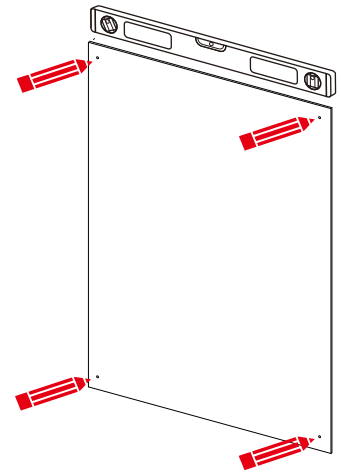


## Step 2



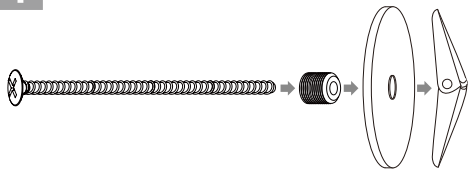
## Step 3

Place the back panel on the wall and mark standoff holes.

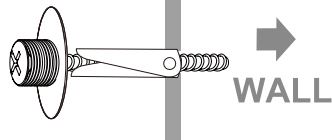


## Step 4 Install the standoffs on the marked spots on the wall

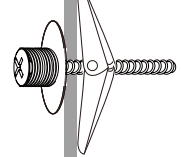
1



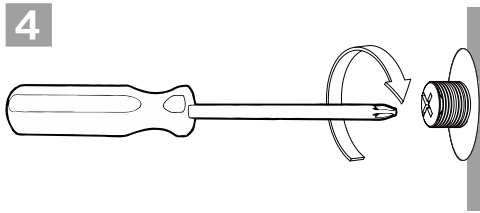
2



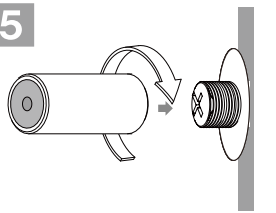
3



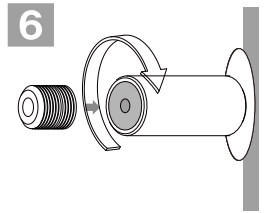
4



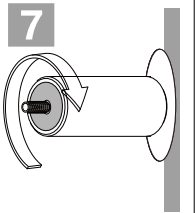
5



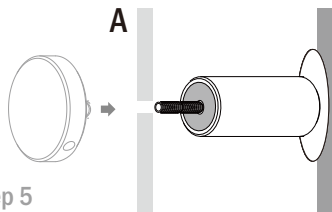
6



7



8



\*Step 5

## Step 5

Place the complete panel and shelves on to the standoffs and secure them with the caps

